

County of Santa Clara

Department of Planning and Development

County Government Center, East Wing, 7th Floor

70 West Hedding Street

San Jose, CA 95110

Phone: (408) 299-5700


www.sccplandev.org



MEMORANDUM

DATE: February 3, 2021

TO: Honorable Board of Supervisors
Members, Planning Commission
Members, San Martin Planning Advisory Committee (SMPAC)

FROM:  ^{DS} Jacqueline R. Onciano, Director, Dept. of Planning and Development

SUBJECT: Industrial Hemp – Update to Informational Maps

This memo is intended to notify the Board regarding a minor mapping error associated with the County's Industrial Hemp Ordinance.

At the August 25, 2020 Board of Supervisors meeting, the Board adopted Ordinance No. NS-1200.373 amending Appendix I, Zoning, of the County of Santa Clara Ordinance Code for purposes of regulating industrial hemp ("hemp") operations. To inform this effort, the Department, in coordination with the Agricultural Commissioner's Office, prepared informational maps showing acreages and number of parcels that would be potentially eligible for hemp operations within the agricultural areas of unincorporated Santa Clara County. Please refer to Attachment B for the informational maps.

As part of the adopted regulations, hemp operations are required to maintain a ¼ mile buffer from sensitive receptors, which for purposes of the hemp regulations include lands within city urban service areas.

Following adoption of the Ordinance, the Department identified a mapping error. The informational maps (Attachment B) indicating the ¼ mile buffer from sensitive receptors, that were presented to the Board, Planning Commission, and SMPAC, showed city limit boundary lines instead of city urban service area boundary lines. Please refer to Attachment A for the corrected map of lands eligible for hemp operations.

The corrected map does not affect the Administration's analysis, including the environmental analysis required under CEQA, nor does it in any way modify the effect of the Board's action from August 25, 2020. The corrected mapping with ¼ mile buffer requirements from city urban service area boundary lines (instead of city limit boundary lines) increases the land eligible for hemp cultivation by 2,598 acres (for a total of 19,285 acres) and 282 parcels (for a total of 2,268 parcels) in the County's Exclusive Agriculture (A) zoning district. Within the San Martin Planning Area, the eligible acreage for hemp operations increases from 307 acres to 402 acres.

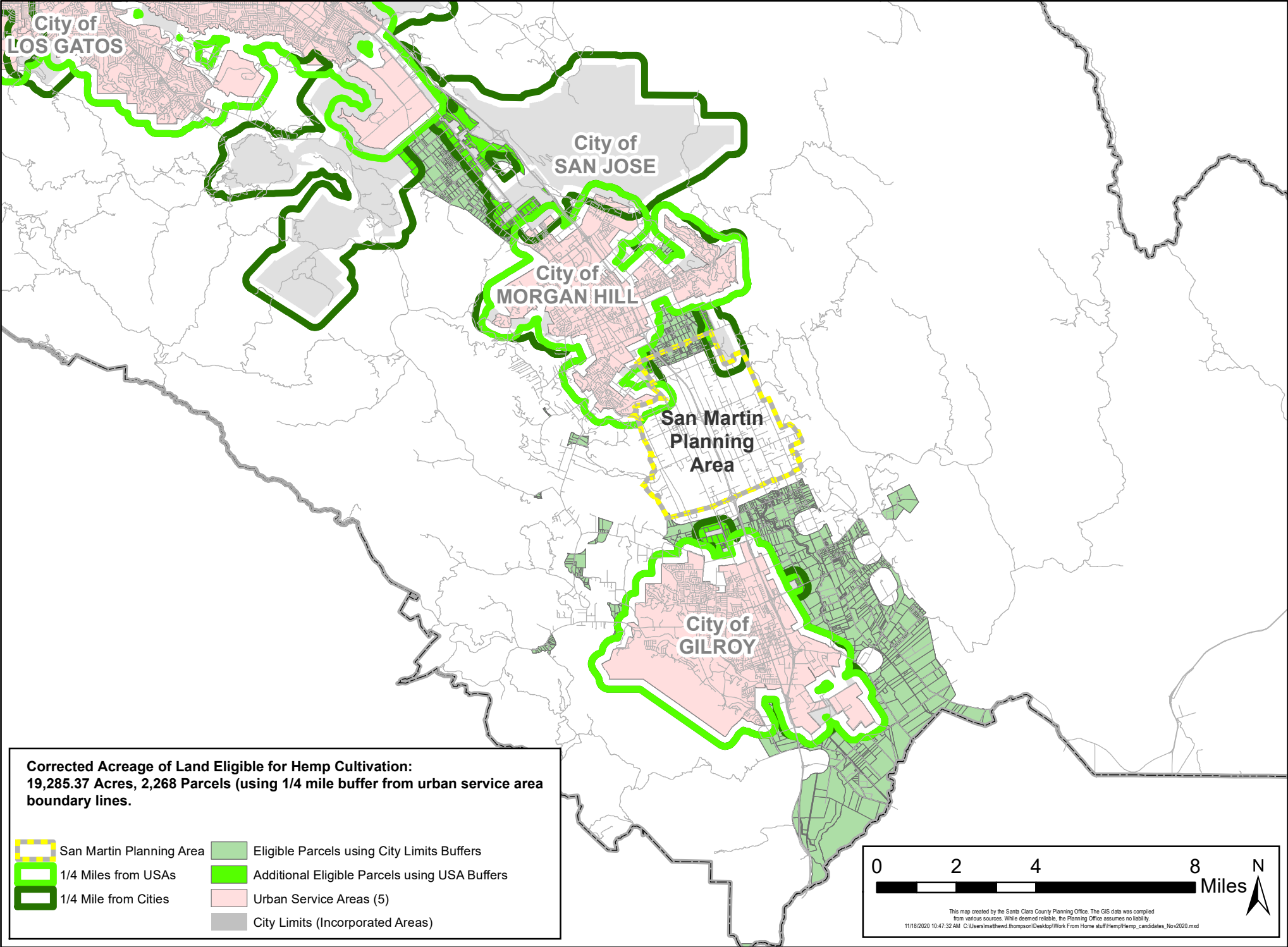
Attachments:

Attachment A - Corrected Map of Lands Eligible for Hemp Operations

Attachment B – Map of Lands Eligible for Hemp Operations presented to the Planning Commission on May 28, 2020 and Board on August 25, 2020

cc: Megan Doyle, Clerk of the Board; bosagenda@cob.sccgov.org
Jeffrey V. Smith, County Executive
Miguel Márquez, Chief Operating Officer
Sylvia Gallegos, Deputy County Executive
Joseph Deviney, Agricultural Commissioner
Board Chiefs of Staff and Land Use Aides

ATTACHMENT A - Lands Eligible For Hemp Operations in Santa Clara County (Revised December 2020)



ATTACHMENT B - Land Eligible For Hemp Operations: 1/4 Mile Buffer

