

County of Santa Clara
Social Services Agency



333 West Julian Street
San Jose, California 95110-2335

DATE: April 10, 2019

TO: Board of Supervisors
Jeffrey V. Smith, M.D., J.D., County Executive

FROM: Robert Menicocci, Agency Director

SUBJECT: DAAS Off-Agenda Report on Elder Population Growth

Under advisement from the Children, Seniors, and Families Committee meeting of March 20, 2019, the Committee requested that Administration provide an off-agenda report to provide BOS offices with data of elder population growth, specifying the age range of the elder population. The following document depicts projected growth among older adults in Santa Clara County and nationwide, from 2016 to 2060.

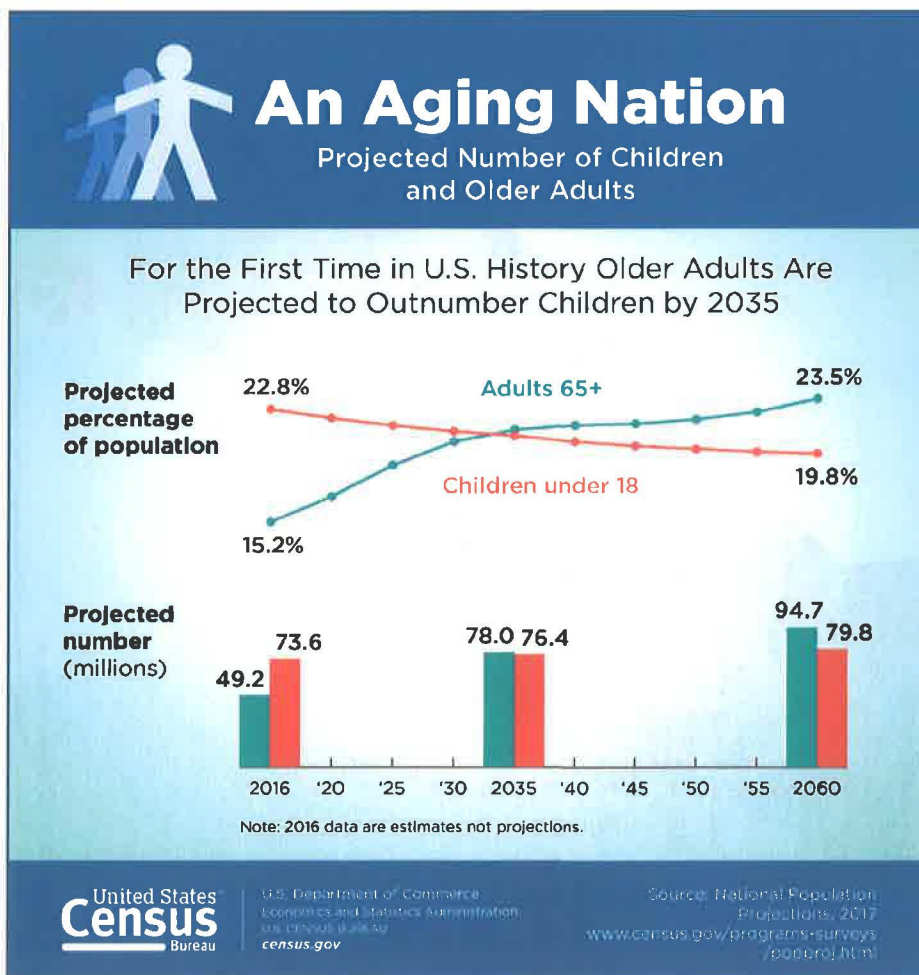
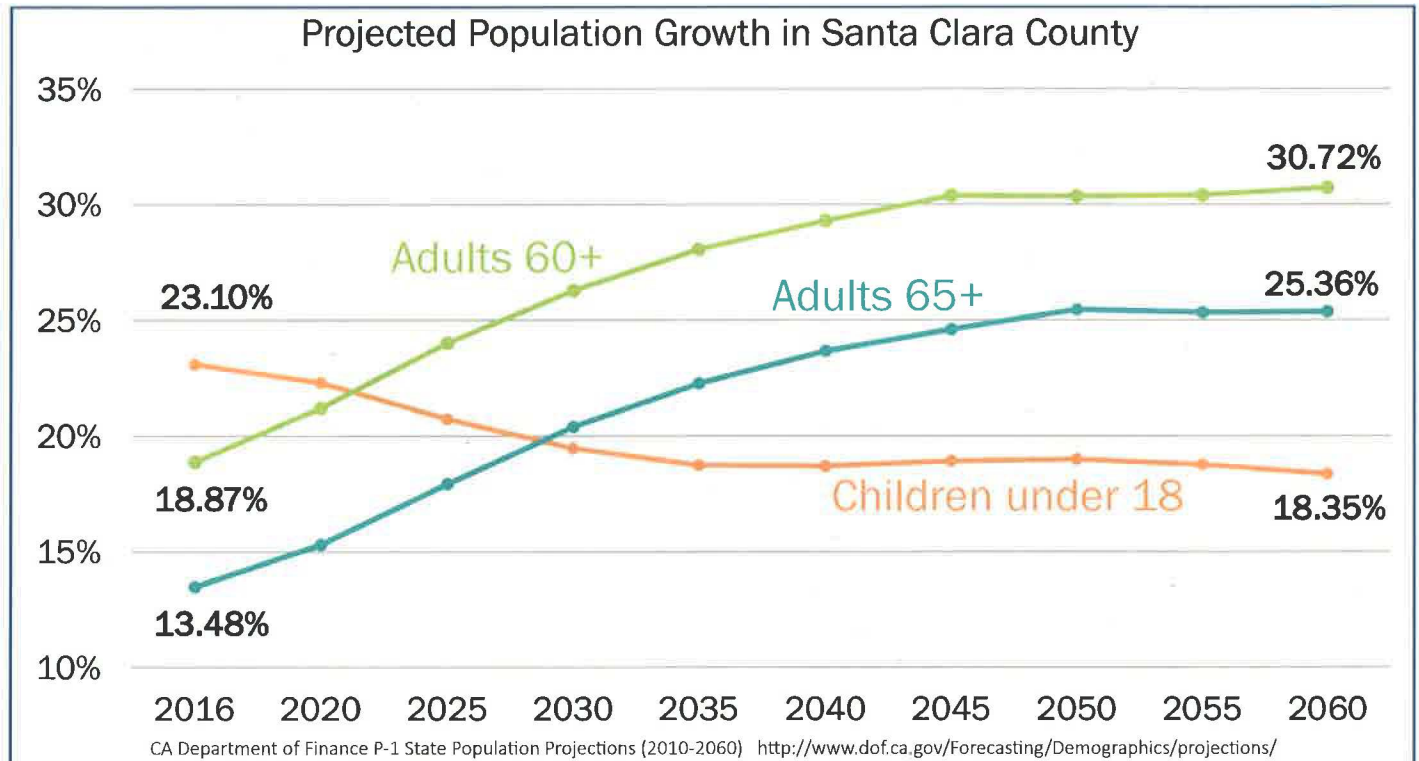
Programs within the Department of Aging and Adult Services (DAAS) have differing eligibility requirements and definitions for older adults. The federal programs governing Adult Protective Services and In-Home Supportive Services define an eligible older adult as age 65 and older. The Senior Nutrition Program's guidelines define older adults as age 60 and older. Due to these differences, DAAS reports projected population growth using both sets of data in its various reports throughout the year. This report compares the projected growth for both these populations in comparison to projections for children under age 18.

c: Chief Board Aides
Miguel Marquez, Chief Operating Officer
James R. Williams, County Counsel
Tiffany Lennear, Assistant Clerk of the Board

Older Adults Will Soon Outnumber Children in Santa Clara County

March 2019

Department of
Aging and Adult Services

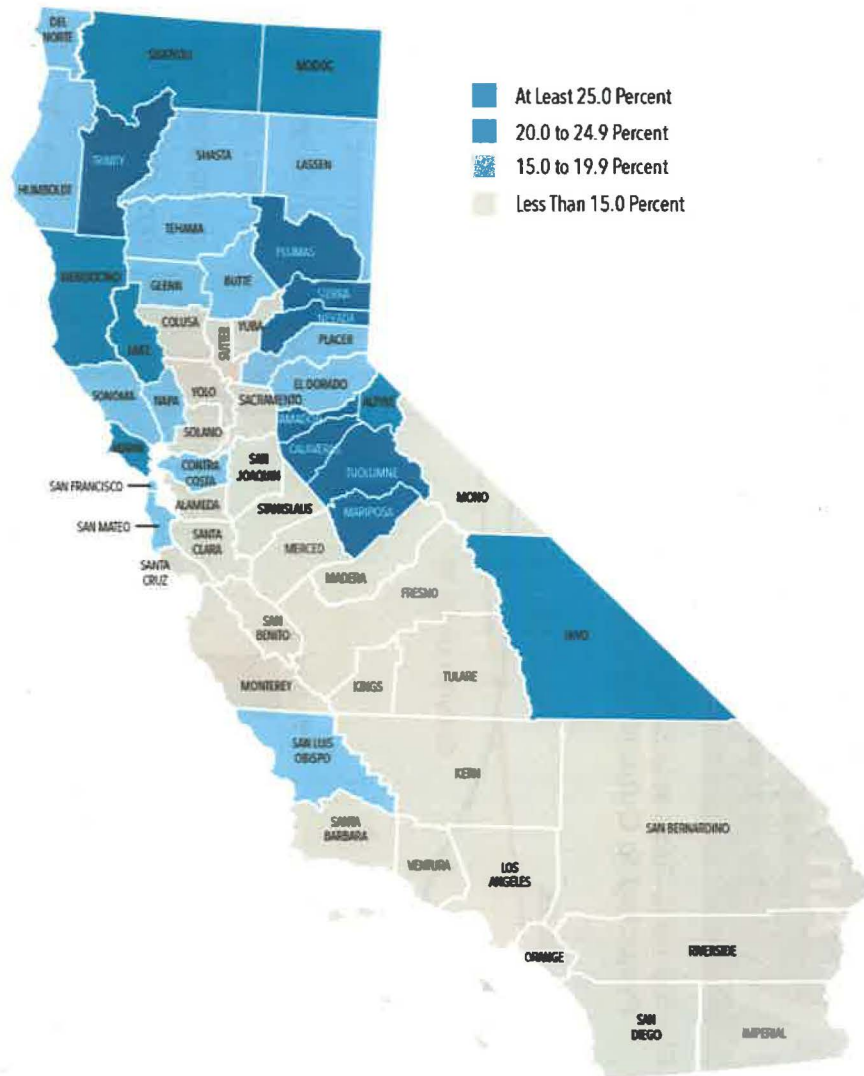


By 2030, the last of the Baby Boomers will be 65 years old and older adults will outnumber children in Santa Clara County, five years sooner than in the United States as a whole.

As projected by the California Department of Finance, adults age 65 and older will make up 20 percent of Santa Clara County's population by 2030 and will grow to over 25 percent by 2060. The number of adults age 60 and older has already climbed beyond the 20 percent mark and will make up over 30 percent of the total population of the county by 2060.

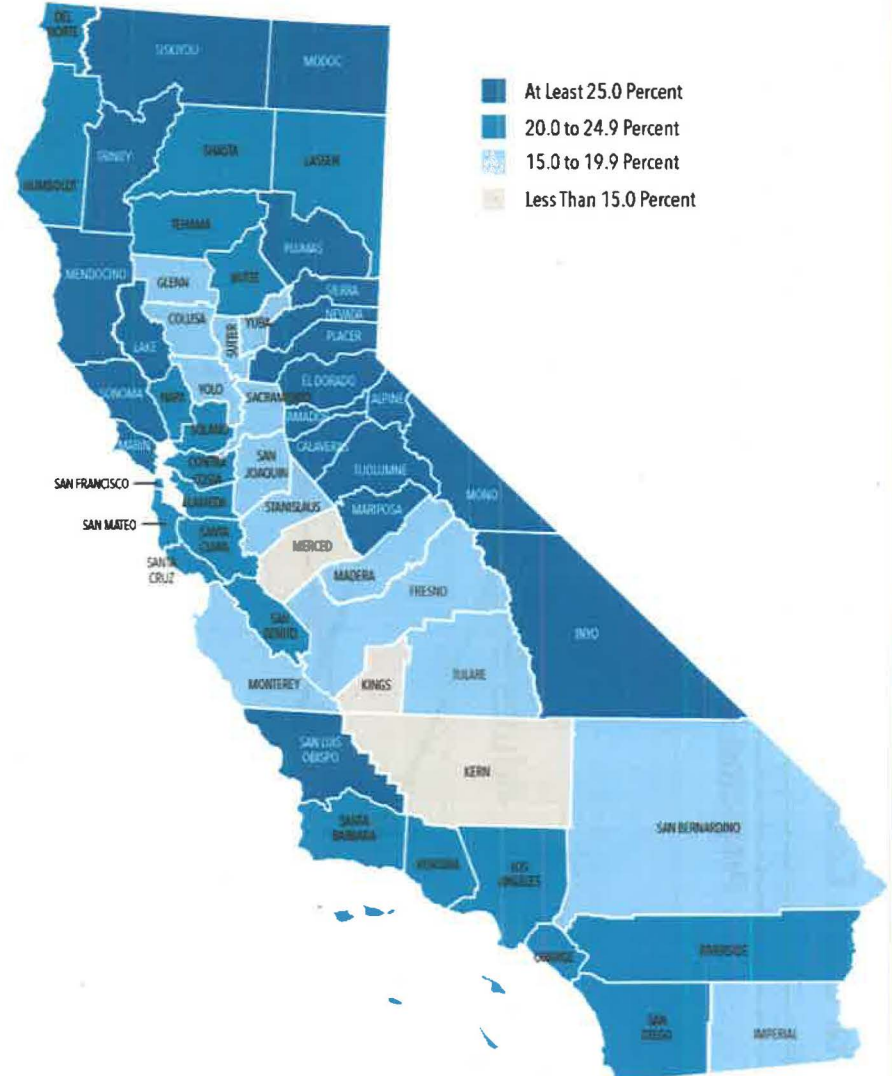
Older Adults Make Up More Than 1 in 4 Residents in Eight Counties

Share of Residents Age 65 or Older, 2016



Older Adults Are Projected to Make Up More Than 1 in 4 Residents in 20 Counties by 2030

Projected Share of Residents Age 65 or Older, 2030



Source: Budget Center analysis of Department of Finance data

Source: Budget Center analysis of Department of Finance data